

Color From Within

The Fiilex P200 FlexJet reshapes what is possible in LED lighting. This powerful LED light has 8 different color settings, 3000K, 4300K, 5600K, Magenta, Yellow, Aqua, Cyan, and Blue. With the P200 and the Color Blender accessory you can project colorful light wherever you desire. With the Fiber Optic accessory you have the power to bend and shape light anyway you want. This is a creative tool that goes where you go and is limited only by your imagination.

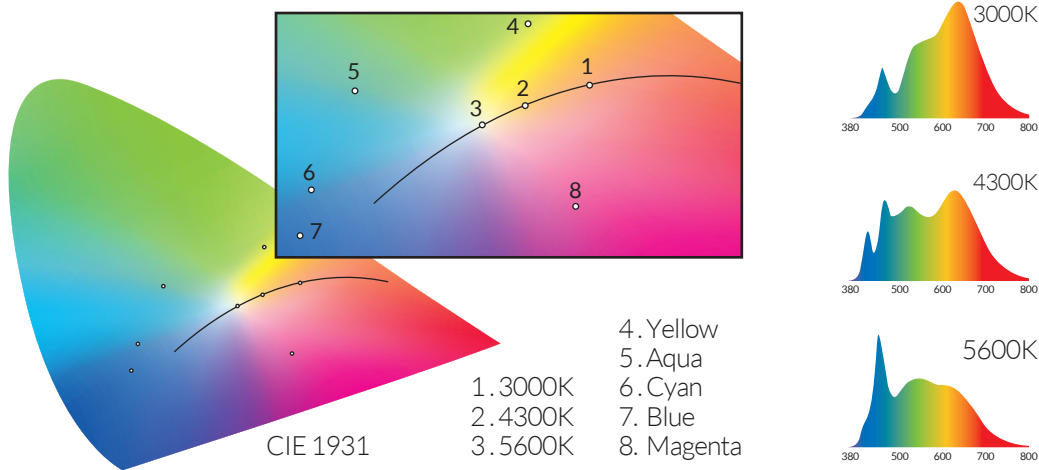


FEATURES

- 200W Equivalent Output - 60W Draw
- Color Temperature Range (8 Color Settings: 3000K, 4300K, 5600K, Magenta, Yellow, Aqua, Cyan, Blue)
- High CRI >92
- Full Spectrum Light Quality - No Spikes
- Dimming (100%-10%)
- Flicker Free at any Frame Rate
- Patented Dense Matrix LED Technology
- Solid State Technology - No Bulbs to Replace
- Compatible with Broadcast Batteries
- Cool to the Touch Housing
- Lightweight, Compact, Easy for Travel

P200 SPECTRUM DATA

Unique in the Fiilex line-up, the P200 Flex Jet has the ability to produce vibrant high quality color. There is no spiking from the full spectrum light, so your colors will look just as amazing to the camera as they do to the eye.



CCT	R1	R2	R3	R4	R5	R6	R7	R8	R9	R10	R11	R12	R13	R14	R15	CRI _{Ra} *	CRI _{Ext} *	TLCI
3000K	95	97	98	94	94	93	98	98	91	90	87	86	92	98	95	96	94	96
4300K	93	95	98	94	94	93	95	94	81	87	91	88	91	98	91	95	92	97
5600K	95	96	98	95	96	95	96	95	81	89	93	91	92	98	92	96	93	98

Values in this table are typical.

*CRI_{Ra} is the averaged result of R1 to R8; CRI_{Ext} is the averaged value of R1 to R15.

PHOTOMETRIC DATA

Distance	1.0m [3.3ft]	3.0m [9.8ft]	5.0m [16.4ft]	Distance	1.0m [3.3ft]	3.0m [9.8ft]	5.0m [16.4ft]
Original				Spot With Optional Color Blender			
	3000K 29 fc [313 Lux]	3000K 4 fc [41 Lux]	3000K 1 fc [15 Lux]		3000K 75 fc [807 Lux]	3000K 9 fc [100 Lux]	3000K 3 fc [36 Lux]
	4300K 33 fc [356 Lux]	4300K 4 fc [47 Lux]	4300K 2 fc [17 Lux]		4300K 86 fc [922 Lux]	4300K 11 fc [113 Lux]	4300K 4 fc [41 Lux]
	5600K 35 fc [376 Lux]	5600K 5 fc [49 Lux]	5600K 2 fc [18 Lux]		5600K 91 fc [977 Lux]	5600K 11 fc [120 Lux]	5600K 4 fc [43 Lux]
	Magenta 12 fc [125 Lux]	Magenta 1 fc [16 Lux]	Magenta 1 fc [6 Lux]		Magenta 31 fc [336 Lux]	Magenta 4 fc [42 Lux]	Magenta 1 fc [15 Lux]
	Yellow 27 fc [294 Lux]	Yellow 4 fc [39 Lux]	Yellow 1 fc [14 Lux]		Yellow 70 fc [753 Lux]	Yellow 9 fc [93 Lux]	Yellow 3 fc [33 Lux]
	Aqua 32 fc [341 Lux]	Aqua 4 fc [44 Lux]	Aqua 1 fc [16 Lux]		Aqua 83 fc [890 Lux]	Aqua 10 fc [110 Lux]	Aqua 4 fc [40 Lux]
	Cyan 37 fc [401 Lux]	Cyan 5 fc [52 Lux]	Cyan 2 fc [19 Lux]		Cyan 97 fc [1048 Lux]	Cyan 12 fc [130 Lux]	Cyan 4 fc [47 Lux]
	Blue 19 fc [203 Lux]	Blue 2 fc [26 Lux]	Blue 1 fc [9 Lux]		Blue 49 fc [530 Lux]	Blue 6 fc [65 Lux]	Blue 2 fc [23 Lux]

Bare
121°

Spot
50°

SPECIFICATIONS

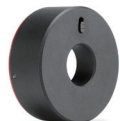
Size (without Barndoor)	4" (Diameter) x 7.8" (length)
Weight (Includes Yoke)	2.8lbs / 1.29 kg
LED	Patented Dense Matrix LED Technology
Thermal Design	Advanced Vapor Cooling System
Color Options	3000K / 4300K / 5600K / Magenta / Yellow / Aqua / Cyan / Blue
CRI	≥92
Power Consumption	60W Max.
Power Input	12 to 28 V DC
AC Adapter	100-240V AC, 50 / 60Hz (In) / 24V DC, 90W max. (Out)
Operating Temperature	0 - 40° C / 32° - 104°F



OPTIONAL ACCESSORIES



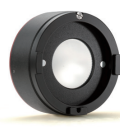
Dome Diffuser



Fiber Cap



Fiber Glow



Color Blender



Fiber Adapter